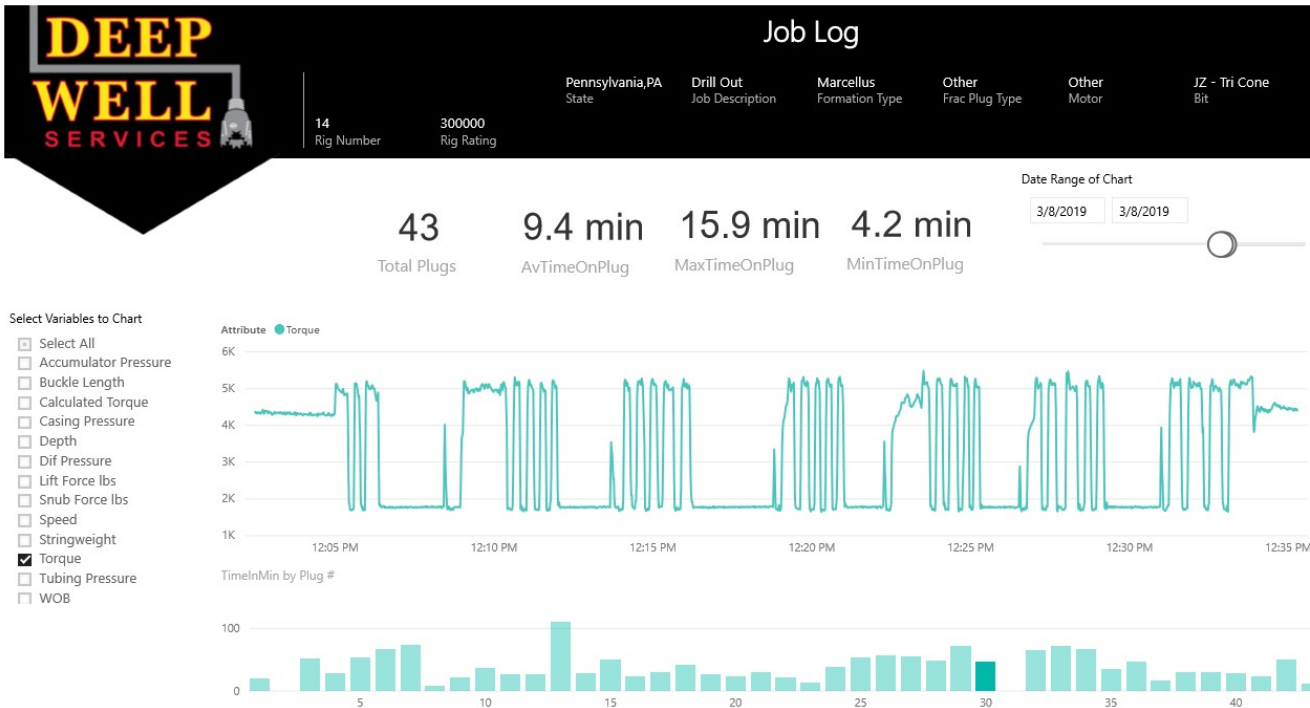


## OUR SNUBWELL® ENGINEERING SERVICE IS USED FOR COLLECTING AND ANALYZING REAL-TIME DATA TO OPTIMIZE WELL DRILLING AND SNUBBING OPERATIONS

- OUR ENGINEERING TEAM CREATES CUSTOM POST-JOB REPORTS FOR WELL ANALYSIS LEADING TO IMPROVED DRILL OUT EFFICIENCIES.
- ABILITY TO LIVE FEED ONSITE OPERATIONAL INFORMATION VIA OUR MOBILE APP.
- VISIBILITY OF REAL-TIME KPIS (RIG UP, TRIP SPEED, PLUG DRILL TIME, ETC.) ALLOWS IMMEDIATE IMPROVEMENT TO ONSITE RIG PERFORMANCE.



THIS SYSTEM UTILIZES OVER A DOZEN DIFFERENT SENSORS TO GATHER INFORMATION SUCH AS:

- PU/SO HOOK LOAD
- TUBING & CASING PRESSURE
- ROTARY TORQUE & RPM
- DIFFERENTIAL PRESSURE
- DEPTH
- WOB



FOR MORE INFORMATION ABOUT OUR SNUBWELL® ENGINEERING SERVICES, PLEASE CONTACT: DEEP WELL SERVICES - (724) 473-0687